

Anna Jaques Hospital Community-based Health Initiative Request for Proposals (RFP) Information Session

Janel D'Agata-Lynch, Manager
AJH Community Benefits Community Relations

Christine Healey, Director
North Regional
Community Benefits Community Relations

Danelle Marable, Director
Evaluation and Data

December 6, 2023

Beth Israel Lahey Health



Anna Jaques Hospital (AJH) Community-based Health Initiative Content



Beth Israel Lahey Health

- Community-based Health Initiative (CHI) Background
- Request for Proposals (RFP) Details
 - Core Principles
 - Eligibility
 - Grant Amounts and Priority Areas
 - Evaluation
 - Funding Guidelines and Budget
 - Scoring Criteria
- RFP Timeline
- Audience Q&A

Community-based Health Initiative (CHI) Background

AJH Community-based Health Initiative

RFP At-a-Glance

Funding Available	\$82,000 over 3 years to address upstream social determinants of health by funding programs and initiatives that lead to more equitable and healthy communities
Priority Areas	Mental Health Substance Use
Priority Communities	Amesbury, Haverhill, Merrimac, Newburyport, and/or Salisbury
Important Dates	January 5, 2024: Submission Deadline January 24, 2024 Applicants Notified March 1, 2024: 3-Year Grant Term Begins

AJH Community-based Health Initiative

Overview

Determination of Need (DoN)

- Required by the MA Department of Public Health (DPH) for major projects
- Funds are distributed to the community to address social determinants of health

Community-based Health Initiative (CHI) Process

- Guided by Anna Jaques Hospital Community Benefits Advisory Committee (CBAC) in selecting priorities and funding allocation plan (no conflicts of interest)
- Engagement of community throughout the process
- Form an Allocation Committee to review proposals and select grantees (no conflicts of interest)
- Evaluate community engagement and impact
- Use an open and transparent process

Total available for
granting over 3
years: ~ **\$82,000**

AJH Community Benefits Advisory Committee (CBAC)



Beth Israel Lahey Health

-
- Made up of local leaders and residents
 - Members represent:
 - Local public health departments
 - Municipalities
 - Education
 - Housing
 - Social services
 - Regional planning and transportation agencies
 - Community health centers
 - Private sector
 - Community-based organizations

AJH Health Priority Selection Process

Community Engagement

- Anna Jaques Hospital's CBAC used findings from the Anna Jaques Hospital 2022 Community Health Needs Assessment (CHNA) to inform the selection of the CHI health priorities and sub-priorities
- The CHNA engaged community residents, public health officials, clinical and social service providers, first responders, faith leaders and government officials through:
 - Community surveys
 - Interviews
 - Focus groups
 - Community listening sessions

AJH Community-based Health Initiative

CHI Distribution



- In June, the CBAC came to consensus on distributing the CHI in the following way

Priority Focus	Mental Health an/or Substance Use
% of the CHI	100%
Total Dollars (over 3 years)	~\$82,000
Annual Dollars	~\$27,333
Means of Award	Competitive RFP
Priority Strategies	<p>Strategies:</p> <ul style="list-style-type: none"> Model that spans the continuum of care from inpatient to outpatient and community initiatives that identify and address mental health needs and substance use disorders. Access to high-quality and culturally and linguistically appropriate mental health and substance use services.
Organizations to be Funded	Up to 2 organizations
Geographic Prioritization	<ol style="list-style-type: none"> Regional Any city/town within AJH Community Benefits Service Area (CBSA)

Request for Proposals (RFP) Details

AJH Community-based Health Initiative

Core Principles



Beth Israel Lahey Health

HEALTH AND RACIAL EQUITY: Use a health and racial equity lens to dismantle systems of oppression and work towards the systemic, fair and just treatment of people of all races, ethnicities, and communities so that all people are able to achieve their full health and overall potential.

IMPACT: Support evidence-based and evidence-informed strategies and programs that positively and meaningfully impact neighborhoods and populations in Boston that face the greatest health inequities.

COMMUNITY: Build community cohesion and capacity by actively engaging with community residents and other stakeholders, including historically underserved or underrepresented populations.

SUSTAINABILITY: Encourage sustained program impact through strategies that may include: leveraging funding to continue program activities, strengthening organizational and community capacity, and forming innovative partnerships and/or cross-sector collaborations.

MOVING UPSTREAM: Address the fundamental causes, or upstream factors, of poor health and racial inequities.

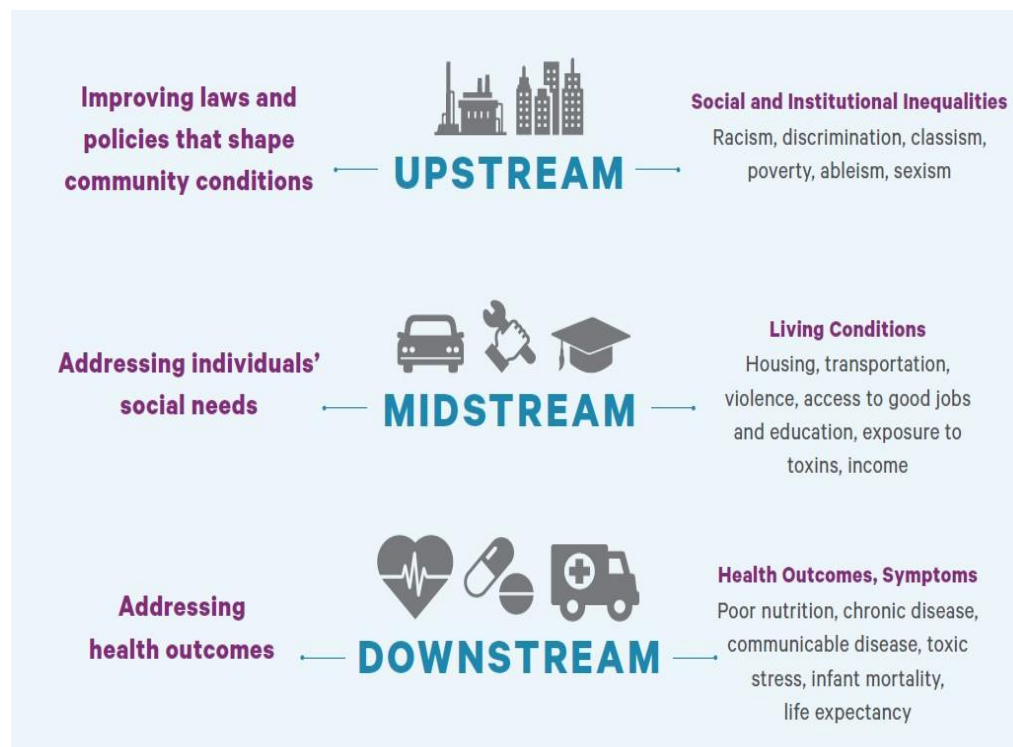
AJH Community-based Health Initiative

Moving Upstream



Beth Israel Lahey Health

- Moving upstream means addressing disparities that impact the social determinants of health – conditions in which people are born, grow, live, work and play
- Anna Jaques Hospital aims to fund programs that are more upstream and are sustainable after the funding period ends

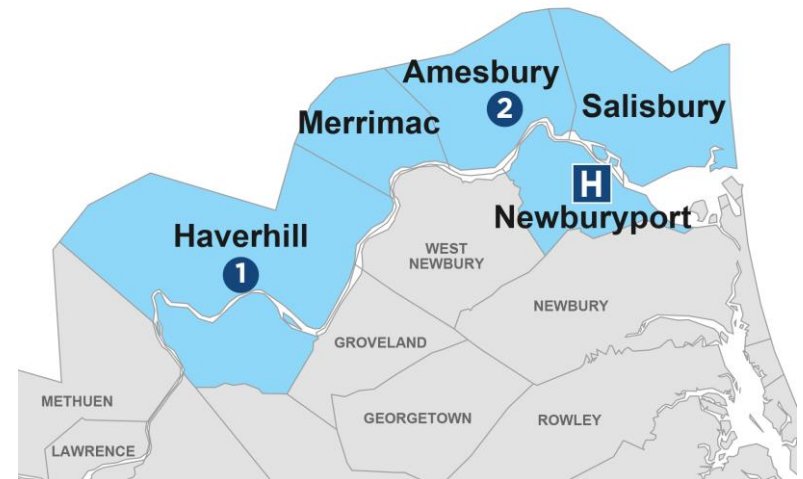


Source: Massachusetts Budget and Policy Center

AJH Community-based Health Initiative

RFP Eligibility

- To apply: must be a tax-exempt organization (with 501(c)3 status) or a public agency
- Organizations must currently serve residents connected to the following communities:
 - Amesbury
 - Haverhill
 - Merrimac
 - Newburyport
 - Salisbury
- Funds may only be used to serve individuals and families that currently serve individuals in or across the cities/towns above.
- Priority will be given to proposals that provide regional/multi community reach.



AJH Community-based Health Initiative

Priority Cohorts



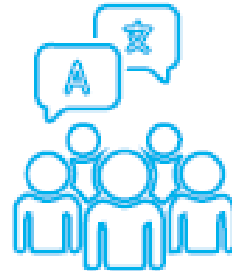
Youth



**Low-resourced
populations**



Older adults



**Racially,
ethnically, and
linguistically
diverse
populations**



**Individuals with
Disabilities**

AJH Community-based Health Initiative

Strategic Focus Areas



Beth Israel Lahey Health

- Funds must address one or more of the following Strategic Focus Areas

Strategic Focus Area	Strategy Description
Mental Health and Substance Use Programs	<ul style="list-style-type: none">Support a model that spans the continuum of care from inpatient to outpatient and community initiatives that identify and address mental health needs and substance use disorders.Provide access to high quality and culturally and linguistically appropriate mental health and substance use services through screening, monitoring, counseling, navigation and treatment.

AJH Community-based Health Initiative Evaluation Process



Beth Israel Lahey Health

Co-Create



Evaluation will be a collaborative process with the grantee to measure what matters

Build Capacity



Technical assistance and workshops will be offered to support data collection for learning and evaluation

Learning & Impact



Ensure data are used to learn and refine program and report impact

AJH Community-based Health Initiative

CHI Evaluation Overview

The purpose Anna Jaques Hospital CHI Evaluation is to learn:

- 1. To what extent have the priority populations been reached?*
- 2. To what extent have outcomes improved across the participant population and/or what progress has been made towards policy change?*

The grantee(s) will be required to develop and implement an individual learning and evaluation plan and report on program-specific evaluation measures to AJH. The BILH Director of Evaluation and Data will provide support and technical assistance, according to the needs and capacity of the organization(s) funded.

The grantee(s) will report on progress toward answering the evaluation questions and fulfilling the individual learning and evaluation plan on a semi-annual basis. These reports will be a mixture of meeting/site visits and written materials. This will be determined during the planning phase.

AJH Community-based Health Initiative Evaluation

Collaborate with Anna Jaques Hospital Evaluator to develop an individual evaluation plan

February-March 2024

- Work with evaluator to understand evaluation needs and capacity.
- Collaborate with the evaluator to develop a learning and evaluation plan.

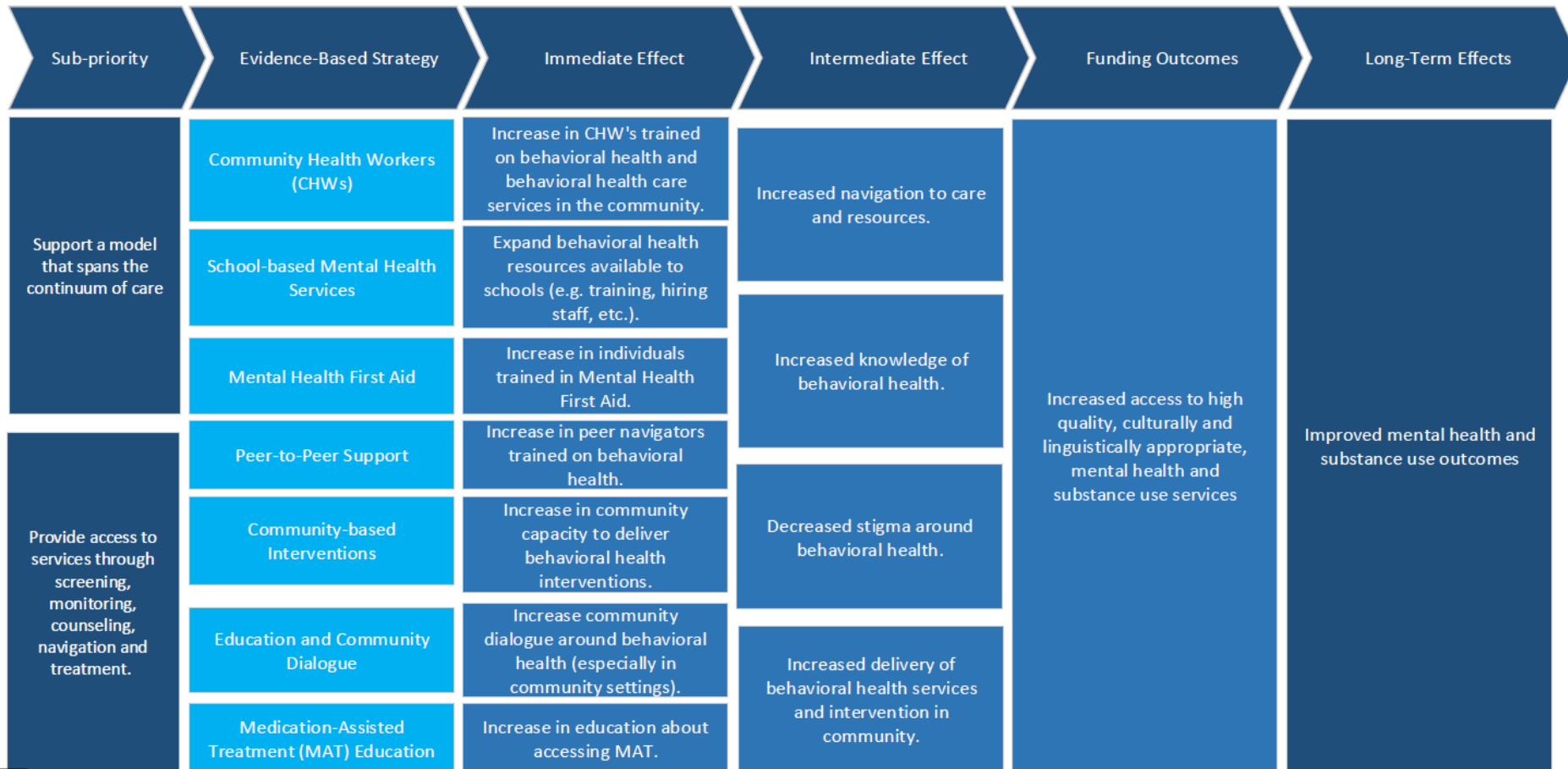
March 2024-March 2027

- Begin program implementation and data collection as defined in the learning and evaluation plan continue for the duration of program implementation
- Participate in technical assistance calls with evaluator and workshops offered by evaluation partners.
- Engage in regular communication with evaluator and Anna Jaques Hospital Community Benefits Manager to discuss any changes to the program implementation or evaluation plans.

AJH Community-based Health Initiative Theory of Change



Beth Israel Lahey Health



13.49 in

AJH Community-based Health Initiative Funding Guidelines and Budget

Funds may be used for:	Funds may not be used to:
<ul style="list-style-type: none">• Project staff salaries• Data collection and analysis• Meetings• Supplies• Related travel• Other direct project-related expenses	<ul style="list-style-type: none">• Provide medical services• Support clinical trials• Construct or renovate facilities or capital expenses, or as a substitute for funds currently being used to support similar activities

Please note:

- Indirect expenses may not exceed 10% of the total budget
- Anna Jaques Hospital allows up to 10% of an applicant's budget to cover expenses such as use of evaluation consultants, data collection tools, translation of data collection tools into appropriate languages, software purchases related to evaluation, etc.

AJH Community-based Health Initiative

Scoring Criteria

-
- Proposals will be scored on a scale from 1 to 4 for the following areas:
 1. Organizational mission aligns with core principles
 2. History of working in priority communities
 3. Proposed project is feasible
 4. Proposed project meets a demonstrated community need
 5. Proposed project addresses health inequities
 6. Proposed project is evidence-based or evidence-informed
 7. Goals are reasonable and aligned with guiding principles
 8. Requested funding is reasonable for proposed activities
 9. Partners and/or collaborators listed would increase the impact of the project (if applicable)
 10. Proposed project has a multi-community/regional focus and/or includes Haverhill
 - Full list of scoring criteria is available in **Appendix B** of the [RFP](#)

RFP Timeline and Q&A

AJH Community-based Health Initiative RFP Timeline

Date(s)	Action
November 28-December 8, 2023	Q&A Period
January 5, 2024	Application due by 5:00 pm Eastern Time
January 24, 2024	Applicants notified of grant decisions
March 1, 2024	Three-year grant term begins
March 1, 2027	End of grant period

AJH Community-based Health Initiative

Frequently Asked Questions

1. Can an organization submit multiple applications?

No, organizations can submit a maximum of one application as a lead organization. An organization can be listed as a partner in multiple applications, though organizations should consider their capacity to complete their responsibilities as partners should multiple projects receive funding.

2. Are non-profits with a fiscal agent eligible to apply?

Non-profit organizations with a fiscal agent (also known as a fiscal sponsor or fiduciary) are eligible to apply for funding.

Question and Answer

Please email any questions to the Community Benefits team at janel.dagata-lynch@bilh.org by December 8, 2023.

Responses will be posted on our website by December 13, 2023.

<https://www.ajh.org/community/anna-jaques-hospital-community-grants>

Thank you!